



# RAPID-TORC

B I G N U T S - B I G T O O L

WWW.RAPIDTORC.COM



## RAPID-TORC® Back-up wrench CC type

**The Back-Up Wrench can be lock on the nut BEFORE to tight.  
The operator can remove hands from the application. Total safety !**

The Rapid-Torc® UniBack is a user-friendly device meant to simplify the makeup or tightening of flanges and other bolting members.

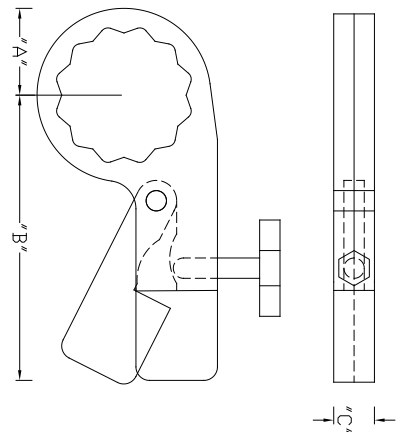
It is not however recommended for the loosening or breakout of flanges due to the fact that a one-piece knocker wrench will suffice since it will come loose anyway once the nut has been freed.

### SAFETY DATA FOR UNI-BACKS

The UniBacks are available in four different groups:

AVAILABLE	SIZES	THICKNESS	MAXIMUM TORQUE
GROUP 1	1-7/16" THRU 2-3/8"	3/4"	1400 FT. LBS.
GROUP 2	2-9/16" THRU 3-1/8"	1"	3200 FT. LBS.
GROUP 3	3-1/2" THRU 4-5/8"	1-1/2"	10800 FT. LBS.
GROUP 4	5" THRU 6-1/8"	2-1/2"	50000 FT. LBS.

<b>Back-up wrenche CC serie</b>					
PART.	s/plat	"A" mm	"B"mm	"C"mm	
CC-107	1-7/16"	36mm	287	133	19
CC-108	1-1/2"	38mm	297	133	19
CC-109	1-9/16"		305	133	19
CC-110	1-5/8"	41mm	315	133	19
CC-111	1-11/16"		323	133	19
CC-112	1-3/4"		333	133	19
CC-113	1-13/16"	46mm	343	133	19
CC-114	1-7/8"		351	133	19
CC-115	1-15/16"		361	133	19
CC-200	2"	50mm	368	133	19
CC-206	2-3/16"	55mm	396	133	19
CC-206	2-3/8"	60mm	424	133	19
CC-209	2-9/16"	65mm	48	178	25
CC-212	2-3/4"	70mm	51	178	25
CC-215	2-15/16"	75mm	53	178	25
CC-302	3-1/8"	80mm	56	178	25
CC-308	3-1/2"	90mm	67	267	32
CC-314	3-7/8"	100mm	72	267	32
CC-404	4-1/4"	110mm	77	267	32
CC-410	4-5/8"	120mm	83	267	32
CC-500	5"	125mm	94	356	5
CC-506	5-3/8"	135mm	99	356	5
CC-512	5-3/4"	145mm	105	356	5
CC-602	6-1/8"	155mm	110	356	5



Existe en Métrique ou Impérial



# RAPID-TORC

B I G N U T S - B I G T O O L

WWW.RAPIDTORC.COM



## RAPID-TORC® Back-up wrenche CC type

### CORROLATION BETWEEN TORQUE VALUE AND UNIBACK TORQUE VALUES

The value of a torque nut is not necessarily transmitted to the bottom nut, held by the UniBack. Studies show that the bottom torque value is normally 10% - 20% of the torque applied on the nut. Therefore, one can assume that if 3000 ft.lbs. is applied on top, the bottom nut sees roughly 500-600 ft.lbs. However, if a lock nut or other locking element is used, the bottom torque value will increase closer to a 1:1 ratio, especially if threads are galled.

For loosening however, the torque value on the bottom nut is unknown due to the fact that it is unknown how heat corroded or otherwise damaged the threads are.

Therefore, it is better to assume almost a 1:1 ratio when loosening with the UniBack.

As stated prior, we do not recommend the UniBack for loosening.

If you require more strength in the UniBack, Rapid-Torc® Tool Works, Inc. can make a special thicker wrench for your particular application.

***Economic Solution, Back-Up wrenches are perfect for your budget and increase drastically your safety.***